

HAMBLETON DISTRICT COUNCIL

Report To: Cabinet
7 June 2016

Subject: PUBLIC OPEN SPACE, SPORT AND RECREATION ACTION PLANS

**Bedale and Easingwold Wards
Portfolio Holder for Leisure Services: Councillor Mrs B S Fortune**

1.0 PURPOSE AND BACKGROUND:

- 1.1 The Council's policy is to endorse Public Open Space, Sport and Recreation Sub Area Action Plans to provide a more strategic and efficient process for allocating future Section 106 monies (see Annex A) either from Local Development Framework allocations or windfall sites.
- 1.2 The purpose of this report is to endorse the Public Open Space, Sport and Recreation Action Plan for Linton on Ouse and the revised Action Plans for Bedale and Alne.
- 1.3 During the transition period between Section 106 fund allocations for public open space and the implementation of the Community Infrastructure Levy action plans will continue to be submitted for the purpose of allocating remaining Section 106 developer contributions and to identify community priorities for open space, sport and recreation that can be shared with Parish Councils to help them make informed decisions for spending CIL contributions that they receive.
- 1.3 The Council's policy states that each Action Plan must comply with the following:
 - Ascertain what is already provided
 - Consider public open space, sport and recreation projects that are included in the local Community or Parish Plan to identify existing need
 - Includes consultation with community groups that manage public open space, sport or recreation facilities to identify future need
 - Includes consultation with the District Council Elected Member(s) and the local Area Partnership
 - Meet the obligations of Public Open Space, Sport and Recreation Supplementary Planning Document
 - Is signed off by a Council Executive Director

The Action Plan detailed in 1.2 meet this criterion.

- 1.4 A copy of the Action Plan is detailed in 1.2 are available at Annex B.

2.0 LINK TO COUNCIL PRIORITIES:

- 2.1 This links primarily to the health and wellbeing priority of the Council.

3.0 RISK ASSESSMENT

- 3.1 Risk has been considered as part of this report and there are no risks identified as a result.

4.0 FINANCIAL IMPLICATIONS:

- 4.1 The main method of delivery of Section 106 allocations is to passport external funding from developers to community groups. Funds will not be committed or released to organisations until the Council has received the monies from the developer.
- 4.2 Action Plans will be subject to 12 monthly reviews to determine progress to ensure that the projects are still relevant and viable.

5.0 LEGAL IMPLICATIONS:

- 5.1 There is a legal responsibility upon the Council to ensure this funding is used in a way consistent with the individual Section 106 Agreements.

6.0 SECTION 17 CRIME AND DISORDER ACT 1998:

- 6.1 Some of these projects have the potential to reduce crime and disorder through providing diversionary activity for young people.

7.0 EQUALITY/DIVERSITY ISSUES:

- 7.1 All projects in receipt of this funding should be subject to an equalities assessment.

8.0 RECOMMENDATION:

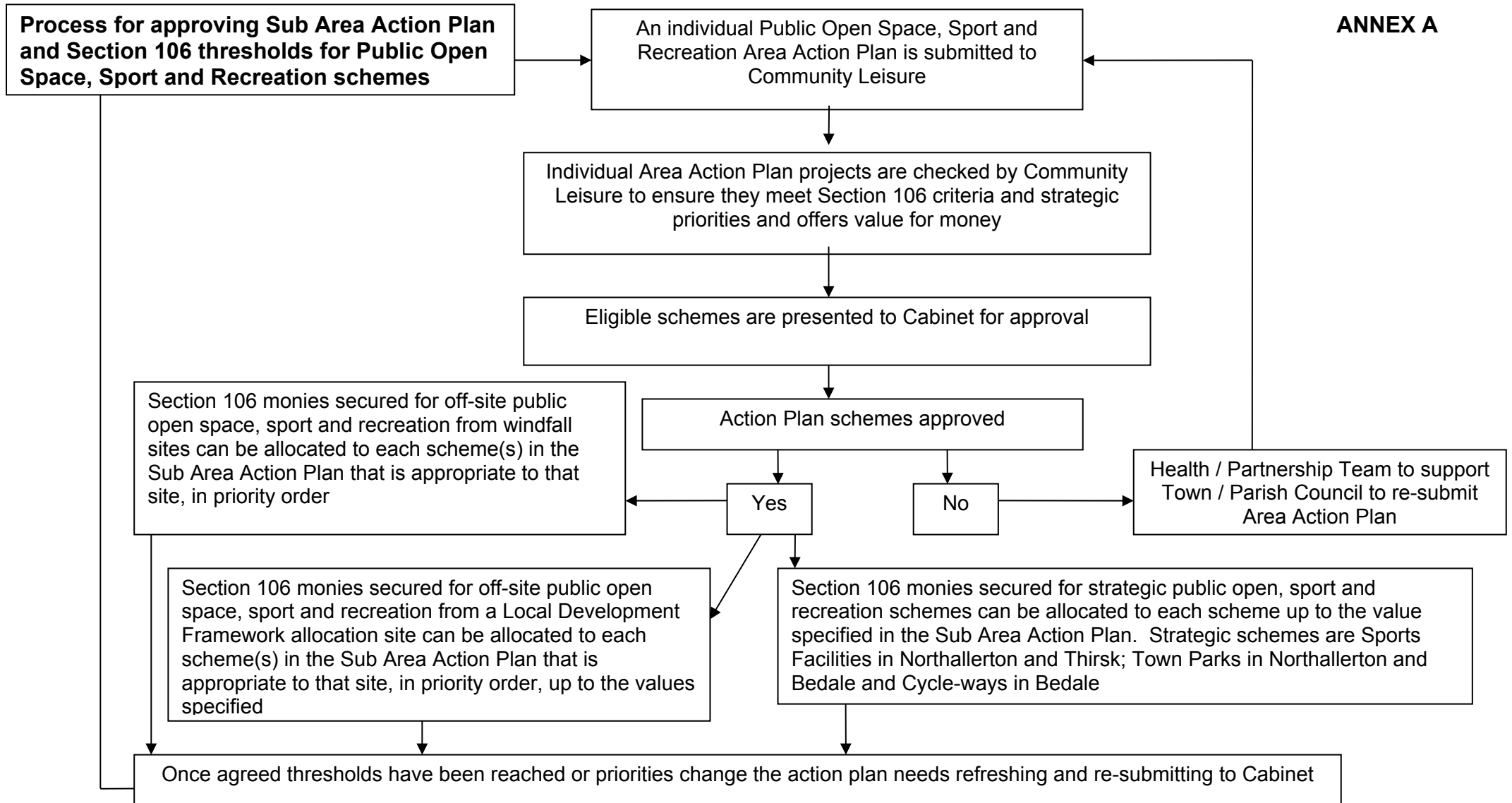
- 8.1 It is recommended that the Public Open Space, Sport and Recreation Action Plan in Annex B be endorsed.

DAVID GOODWIN

Background papers: Hambleton Local Development Framework – Open Space, Sport and Recreation Supplementary Planning Document

Author ref: DRG

Contact: David Goodwin
Executive Director
01609 767147



HAMBLETON
DISTRICT COUNCIL

PUBLIC OPEN SPACE, SPORT AND RECREATION ACTION PLAN – BEDALE

What POS / Sport / Recreation facilities do you have already?	Managing organisation and contact details	Future actions	How do you know there is a need for this project?	Estimated cost (£)	Priority (1 = highest priority)
Multi-sports Club; Football Club; Leisure Centre; Floodlit pitch; golf club; public open space; play areas; allotments					
Golf Club	Bedale Golf Club	Develop an Academy Course and a swing studio for community use	Consultation with Schools, North Yorkshire Sport and the Golf Foundation show there is a need to non-membership golf facilities that are accessible to all members of the community including disabled golfers.	£29,000	1
Football Club	Bedale Junior Football Club	Shelter areas	To encourage parents to watch the game during inclement weather to help retain community involvement and volunteering	£3,000	2
Football Club	Bedale Junior Football Club	Landscaping equipment	Strimming equipment and recycling bins to improve the environment of the site	£420	3

What POS / Sport / Recreation facilities do you have already?	Managing organisation and contact details	Future actions	How do you know there is a need for this project?	Estimated cost (£)	Priority (1 = highest priority)
Football Club	Bedale Junior Football Club	Install floodlighting to maximise use of land	To address capacity issues in training at Leisure Centre over the winter. Purchasing portable floodlighting is a lower cost, simpler and flexible option.	£3,400	4
Other public space	North Yorkshire County Council	To provide a town centre feature area to the front of the post office, Market Place	Identified by the Bedale and Villages Community Forum as one of the key targets for the continuing development of the town and has been supported by the Town Council.	£150,000	5

PUBLIC OPEN SPACE, SPORT AND RECREATION ACTION PLAN – ALNE

What POS / Sport / Recreation facilities do you have already?	Managing organisation and contact details	Future actions	How do you know there is a need for this project?	Estimated cost (£)	Community Priority (1 = highest priority)
Green spaces – wider grass verges	Alne Parish Council	Installation of setts to protect verges from further damage by vehicular traffic	Village complaints to Parish Council	£80,000	1
Recreation Area (play area, skate park, tennis courts, multi-use games area, nature area, playing fields and side hut)	Alne Parish Leisure Association	Football goal posts and nets	Alne Parish Leisure Association survey	£1,000	2
		Creation of a bowling green	Alne Parish Leisure Association survey	£110,000	3
Cricket Club (3 senior teams and cricket training facility for over 100 young people; clubhouse used for other social activities within the village)	Alne Cricket Club	Improvements to clubhouse – windows, boiler and showers	Consultation with members and the wider community regarding current facilities	£50,000	4

PUBLIC OPEN SPACE, SPORT AND RECREATION ACTION PLAN – LINTON ON OUSE

What POS / Sport / Recreation facilities do you have already?	Managing organisation and contact details	Future actions	How do you know there is a need for this project?	Estimated cost (£)	Community Priority (1 = highest priority)
War memorial garden	Linton on Ouse Parish Council, Village Hall Committee	Revamp of garden to include purchase and installation of new bench, stone planters, bulbs and plants, removal of concrete surface and reurfing of same	Public consultations held in 2015 and further Parish Council discussions	£2000	1
Playing field / playground	Linton on Ouse Parish Council	Purchase and installation of exercise equipment to benefit adults	Public consultations held in 2015 and further Parish Council discussions	£5500	2
Village Allotments	Linton on Ouse Allotments Committee	Equipment to establish and develop new allotments	Consultation with prospective allotment holders	£5500	3
Playground	Linton on Ouse Parish Council	Purchase and installation of new play/exercise equipment to benefit 12-16 year olds	Public consultations held in 2015 and further Parish Council discussions	£6000	4
Street	Linton on Ouse Parish Council	Maintenance including pruning/trimming of Main Street trees	Public consultations held in 2015 and further Parish Council discussions	£1000	5
Village Hall	Linton on Ouse Village Hall Committee	Purchase and installation of cycle racks and recycling bins	Public consultations held in 2015 and further Parish Council discussions	£1000	6
Main Street	Linton on Ouse Parish Council	Purchase and installation of additional new village notice boards	Public consultations held in 2015 and further Parish Council discussions	£1000	7